



MASTER LEDtube InstantFit HF T8

MASTER LEDtube HF 1200mm HO 14W830 T8

Philips MASTER LEDtube InstantFit T8 integrates a LED light source into a traditional fluorescent form factor. Its unique design creates a perfectly uniform visual appearance which cannot be distinguished from traditional fluorescent. Philips MASTER LEDtube InstantFit T8 is the ideal solution for customers who have higher light requirements and want to maximize value over lifetime.;Full energy savings & longer lifetime result in attractive payback times and TCO benefits.

Product data

| General Information | |
|------------------------------------|----------------------------------|
| Cap-Base | G13 [Medium Bi-Pin Fluorescent] |
| Main Application | Industrial |
| Nominal Lifetime (Nom) | 50000 h |
| Switching Cycle | 50000X |
| B50L70 | 50000 h |
| Light Technical | |
| Color Code | 830 [CCT of 3000K] |
| Beam Angle (Nom) | 160 ° |
| Luminous Flux (Nom) | 2000 lm |
| Luminous Flux (Rated) (Nom) | 2000 lm |
| Rated Beam Angle | 160 ° |
| Correlated Color Temperature (Nom) | 3000 K |
| Color Consistency | <6 |
| Color Rendering Index (Nom) | 83 |

| LLMF At End Of Nominal Lifetime (Nom) 70 % | |
|--|---------|
| Operating and Electrical | |
| Power (Rated) (Nom) | 14 W |
| Lamp Current (Max) | 700 mA |
| Lamp Current (Min) | 300 mA |
| Starting Time (Nom) | 0.5 s |
| Warm Up Time To 60% Light (Nom) | 0.5 s |
| Power Factor (Nom) | 0.9 |
| Voltage (Nom) | 30-80 V |
| Temperature | |
| T-Ambient (Max) | 45 °C |
| T-Ambient (Min) | -20 °C |
| T-Storage (Max) | 65 °C |
| T-Storage (Min) | -40 °C |

MASTER LEDtube InstantFit HF T8

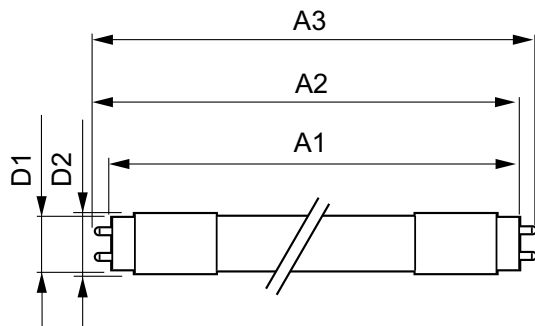
| | |
|---------------------------------|--|
| T-Case Maximum (Nom) | 55 °C |
| Controls and Dimming | |
| Dimmable | Yes |
| Mechanical and Housing | |
| Product Length | 1200 mm |
| Approval and Application | |
| Energy Saving Product | Yes |
| Energy Efficiency Label (EEL) | A+ |
| Approval Marks | TUV CE marking RoHS compliance KEMA Keur certificate |

| | |
|---------------------------------|---------------------------------------|
| Energy Consumption kWh/1000 h | 17 kWh |
| Product Data | |
| Full product code | 871869668752900 |
| Order product name | MASTER LEDtube HF 1200mm HO 14W830 T8 |
| EAN/UPC - Product | 8718696687529 |
| Order code | 929001284302 |
| Numerator - Quantity Per Pack | 1 |
| Numerator - Packs per outer box | 10 |
| Material Nr. (12NC) | 929001284302 |
| Net Weight (Piece) | 0.450 kg |

Warnings and Safety

- NOTES: The overall energy efficiency and light distribution of any installation that uses these lamps are determined by the design of the installation.

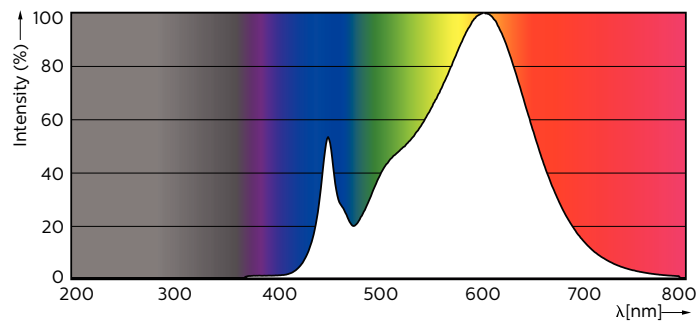
Dimensional drawing



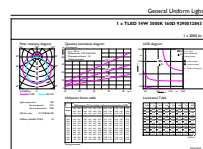
MAS LEDtube HF 1200mm HO 14W830 T8

| Product | D1 | D2 | A1 | A2 | A3 |
|---------------------------------------|---------|-------|-----------|-----------|-----------|
| MASTER LEDtube HF 1200mm HO 14W830 T8 | 25.6 mm | 28 mm | 1198.1 mm | 1205.2 mm | 1212.3 mm |

Photometric data



MAS LEDtube HF 1200mm HO 14W830 T8



General technical drawing

MASTER LEDtube InstantFit HF T8

