



MASTER LEDtube EM/Mains T8

MAS LEDtube 1200mm UO 16W 840 T8

The Philips MASTER LEDtube integrates a LED light source into a traditional fluorescent form factor. Its unique design creates a perfectly uniform visual appearance which cannot be distinguished from traditional fluorescent. For those that are looking for value for money within limited budget and re-lamping efforts for better light effect and lifetime.

Product data

General Information		Lamp Current (Min)	
Cap-Base	G13 [Medium Bi-Pin Fluorescent]		68 mA
Nominal Lifetime (Nom)	50000 h	Starting Time (Nom)	0.5 s
Switching Cycle	200000X	Warm Up Time To 60% Light (Nom)	0.5 s
B50L70	50000 h	Power Factor (Nom)	0.9
Voltage (Nom)		220-240 V	
Light Technical		Temperature	
Color Code	840 [CCT of 4000K]	T-Ambient (Max)	45 °C
Luminous Flux (Nom)	2500 lm	T-Ambient (Min)	-20 °C
Luminous Flux (Rated) (Nom)	2500 lm	T-Storage (Max)	65 °C
Correlated Color Temperature (Nom)	4000 K	T-Storage (Min)	-40 °C
Color Consistency	<6	T-Case Maximum (Nom)	55 °C
Color Rendering Index (Nom)	83	Controls and Dimming	
LLMF At End Of Nominal Lifetime (Nom)	70 %	Dimmable	No
Operating and Electrical		Mechanical and Housing	
Input Frequency	50 to 60 Hz	Product Length	1200 mm
Power (Rated) (Nom)	16 W		
Lamp Current (Max)	75 mA		

MASTER LEDtube EM/Mains T8

Approval and Application

Energy Saving Product	Yes
Energy Efficiency Label (EEL)	A++
Approval Marks	TUV CE marking RoHS compliance KEMA Keur certificate
Energy Consumption kWh/1000 h	16 kWh

Product Data

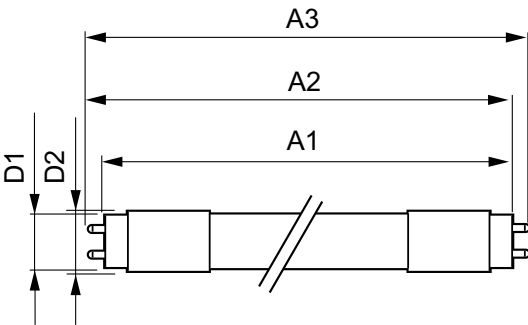
Full product code	871869668738300
-------------------	-----------------

Order product name	MAS LEDtube 1200mm UO 16W 840 T8
EAN/UPC - Product	8718696687383
Order code	929001297902
Numerator - Quantity Per Pack	1
Numerator - Packs per outer box	10
Material Nr. (12NC)	929001297902
Net Weight (Piece)	0.270 kg

Warnings and Safety

- NOTES: The overall energy efficiency and light distribution of any installation that uses these lamps are determined by the design of the installation.

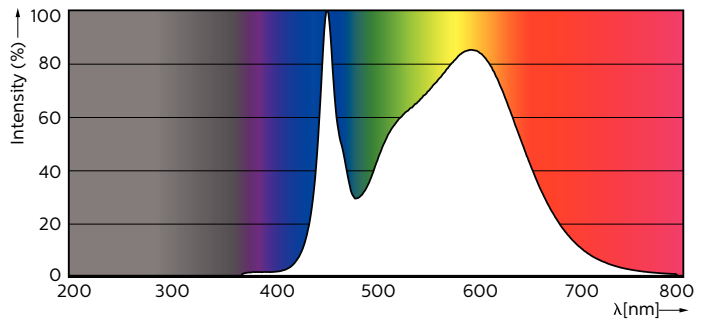
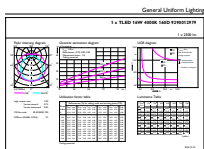
Dimensional drawing



TLED 4ft 16W-36W 2500lm 160D 4000K G13ND

Product	D1	D2	A1	A2	A3
MAS LEDtube 1200mm UO 16W 840 T8	25.78 mm	28 mm	1198.2 mm	1205.3 mm	1212.4 mm

Photometric data



LEDtube 1200mm UO 16W 840 T8

MASTER LEDtube EM/Mains T8

