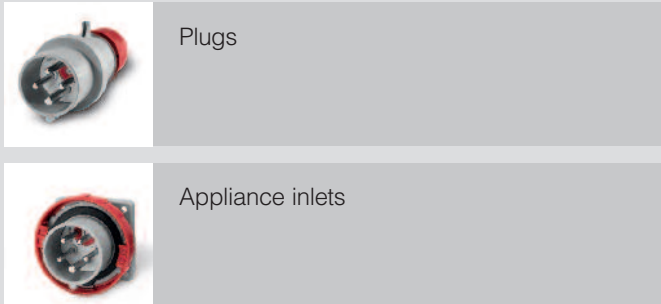


OPTIMA-REVERSE Series

PLUGS WITH PHASE INVERTER



VERSIONS



PHASE INVERTER



Fixed and movable plugs which rapidly invert two phases in order to return to the correct direction of rotation of three-phase motors for movable and fixed applications.

REFERENCE STANDARDS

EN 60309-1

Plugs, socket-outlets and couplers for industrial purposes.
Part 1: general requirements.

EN 60309-2

Plugs, socket-outlets and couplers for industrial purposes.
Part 2: dimensional interchangeability requirements for pin and contact-tube accessories.

TECHNICAL CHARACTERISTICS

Rated current:	16A-32A
Rated voltage:	346÷415V~
Frequency:	50÷60Hz
Insulating voltage:	690V~
Protection degree:	IP44 - IP66/IP67
Operating temperature according to the reference standard:	-25°C +40°C
Max operating temperature:	60°C
Glow wire test:	650°C/850°C
Material:	Engineering plastic
IK degree at 20°C:	IK08
Cable inlets:	Cable gland
Halogen free:	Yes
Terminals:	Screw
Snap-on device:	16A-32A
Polarity:	3P+E / 3P+N+E
Connectable cables:	Flexible class 5 or 6

BEHAVIOUR WITH CHEMICAL AND ATMOSPHERIC AGENTS

Saline solution	Acids		Bases		Solvents				Mineral oil	UV rays
	Concentrated	Diluted	Concentrated	Diluted	Hexane	Benzol	Acetone	Alcohol		
Resistant	Limited Resistance	Resistant	Resistant	Resistant	Not Resistant	Not Resistant	Not Resistant	Limited Resistance	Resistant	Limited Resistance

For specific substances please contact our technical

service.

■ WIRING AND INSTALLATION

Wiring capacity of the terminals (mm²)

Rated voltage	Rated current (A)	Plugs Appliance inlets	
		Min	Max
Over 50V	16A	1	2,5
	32A	2,5	6

Max. cable size accepted by the cable clamp:

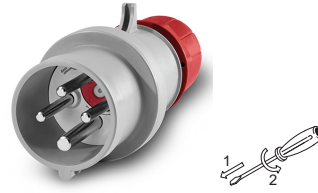
Rated current (A)	Outside Ø mm	
	Min	Max
16A	8	15
32A	11,5	21

■ OPERATING PRINCIPLE OF THE PHASE INVERTER



The phases are inverted by simply pushing and turning the phase pin support with a screwdriver.

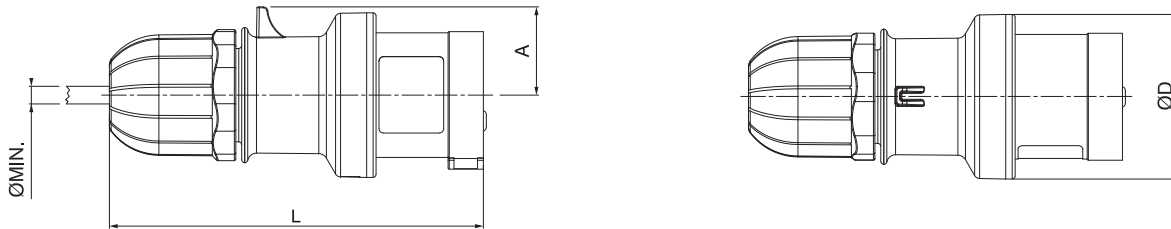
PLUGS WITH PHASE INVERTER IP54



Poles	Hz.	Volt	Colour	h.	IP44/54	
					16A cable gland □ 10/50	32A cable gland □ 10/40
3P+E	50/60	380-415		6	213.1636RV	213.3236RV
3P+N+E	50/60	346-415		6	213.1637RV	213.3237RV

DIMENSIONS

PLUGS 16-32-63-125A



IP44		A	Ø D	L Min	Ø Min
16A	2P+E	30	56	128	6
	3P+E	34	60	135	6
	3P+N+E	38	65	153	9
32A	2P+E	40	65	162	9
	3P+E	40	65	162	9
	3P+N+E	45	73	176	13
63A	2P+E	50	102	220	17
	3P+E	50	102	220	17
	3P+N+E	50	102	220	17

(Dimension in mm)

