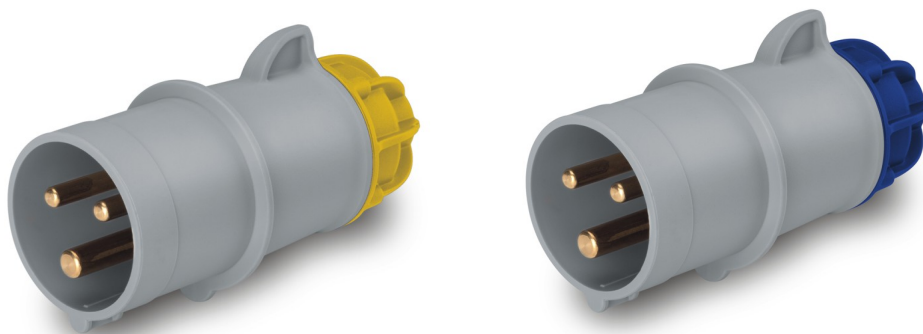




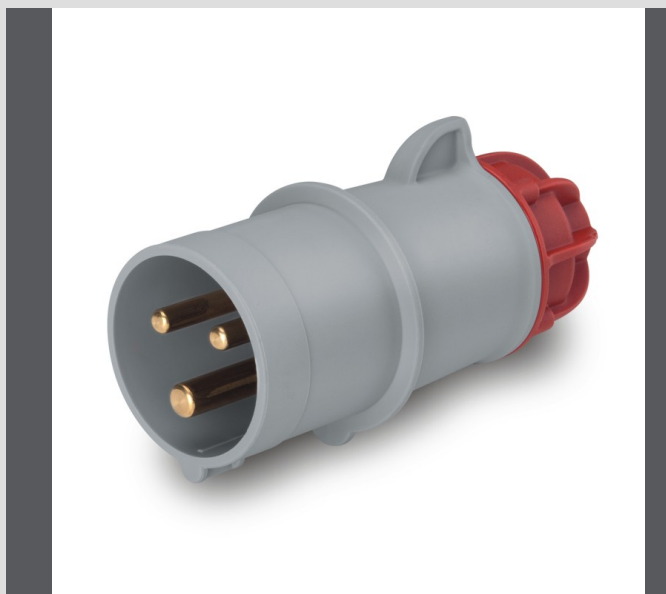
# XENIA SERIES

Industrial plugs IP44



# XENIA Series

## INDUSTRIAL PLUGS AND SOCKETS



## REFERENCE STANDARDS

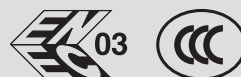
### EN 60309-1

Plugs, socket-outlets and couples for industrial purposes.  
Part 1: general requirements.

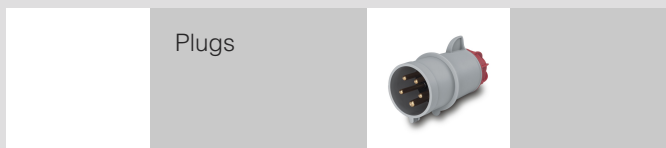
### EN 60309-2

Plugs, socket-outlets and couples for industrial purposes.  
Part 2: dimensional interchangeability requirements for pin and contact-tube accessories.

## QUALITY MARKS



## VERSIONS



## TECHNICAL CHARACTERISTICS

Rated current:	<b>16A-32A</b>
Rated voltage:	<b>110-130V 200-250V 380-415V</b>
Frequency:	<b>50/60Hz</b>
Insulation voltage:	<b>500V</b>
Protection degree:	<b>IP44</b>
Operating temperature according to the reference standard:	<b>-25°C +40°C</b>
Glow wire test:	<b>850°C contacts carrier 650°C handle</b>
IK degree:	<b>IK07</b>
Material:	<b>Engineering plastic</b>

## WIRING AND INSTALLATION

Wiring capacity of the terminals  
Cross-section of connectable conductors (mm<sup>2</sup>)

Rated voltage	Rated current (A)	Plugs and connectors		Sockets outlet	
		Min	Max	Min	Max
>50V	16A	1,5	2,5	1,5	4
	32A	2,5	6	2,5	10

Max. cable size accepted by the cable clamp

Rated current (A)	Outside Ø mm	
	Min	Max
16A	8	15
32A	11,5	21

## BEHAVIOUR WITH CHEMICAL AND ATMOSPHERIC AGENTS

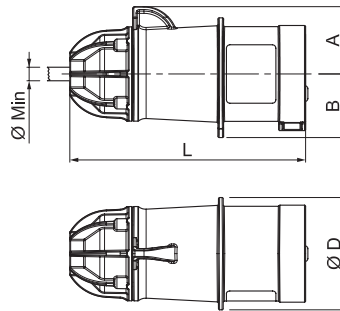
Saline solution	Acids		Bases		Solvents				Mineral oil	UV rays
	Concentrated	Diluted	Concentrated	Diluted	Hexane	Benzol	Acetone	Alcohol		
Resistant	Not Resistant	Limited Resistance	Limited Resistance	Resistant	Resistant	Resistant	Resistant	Resistant	Resistant	Resistant

For specific substances please contact our technical service.

**PLUGS - IP44**


Poles	Hz	Volt	Color	h	16A		32A	
					Package	Bulk Pack	Package	Bulk Pack
2P+E	50/60	100-130	Yellow	4	214.1630	50	214.3230	25
	50/60	200-250	Blue	6	214.1633	50	214.3233	25
3P+E	50/60	380-415	Red	6	214.1636	40	214.3236	25
3P+N+E	50/60	346-415	Red	6	214.1637	30	214.3237	20

☐ Package/Bulk Pack

**DIMENSIONS**


		A	B	ØD	L Min	Ø	
						Min	Max
16A	2P+E	30	28,3	50	105	7,5	12,6
	3P+E	34	31,75	56	113	8,2	13,8
	3P+N+E	38	35,6	63	119	9,2	15,2
32A	2P+E	40	38,2	64,5	131	11	16,1
	3P+E	40	38,2	64,5	131	12,3	17,9
	3P+N+E	45	41,75	70,5	139	13,6	19,9

(Dimensions in mm)

