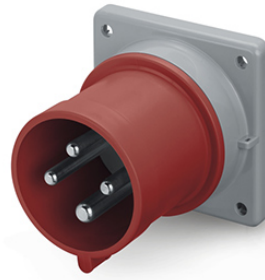
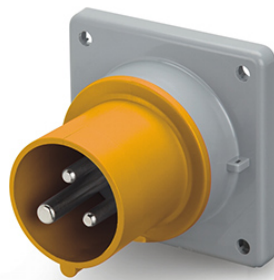




OPTIMA SERIES

Industrial Appliance inlets



■ BEHAVIOUR WITH CHEMICAL AND ATMOSPHERIC AGENTS

Saline solution	Acids		Bases		Solvents				Mineral oil	UV rays
	Concentrated	Diluted	Concentrated	Diluted	Hexane	Benzol	Acetone	Alcohol		
Resistant	Limited Resistance	Resistant	Resistant	Resistant	Not Resistant	Not Resistant	Not Resistant	Limited Resistance	Resistant	Limited Resistance

For specific substances please contact our technical service.

■ WIRING AND INSTALLATION

Wiring capacity of the terminals (mm²)

Max. cable size accepted by the cable clamp:

Rated voltage	Rated current (A)	Plugs, connectors and appliance inlets		Socket outlets	
		Min	Max	Min	Max
Over 50V	16A	1	2,5	1,5	4
	32A	2,5	6	2,5	10
	63A	6	16	6	25
	125A	16	50	25	70

Rated current (A)	Outside Ø mm	
	Min	Max
16A	8	15
32A	11,5	21
63A	17	31
125A	26	48

■ APPLICATION EXAMPLES



Industrial plugs and sockets

FLUSH MOUNTING APPLIANCE INLETS

IP44



Poles	Hz.	Volt	Colour	h.	Screw terminals		Mantle terminals
					16A 75x75 □ 10/50	32A 75x75 □ 10/50 ⁽¹⁾	63A 100x110 6/30
2P+E	50/60	100-130	Yellow	4	243.1690	243.3290	243.6390
	50/60	200-250	Blue	6	243.1693 (▲)	243.3293 (▲)	243.6393 (▲)
	50/60	380-415	Red	9	243.1698	243.3298	243.6398
	50/60	480-500	Black	7	243.16936	243.32936	243.63936
	50/60	trasf.	Grey	12	243.16933	243.32933	243.63933
	>300-500	>50	Green	2	243.16932	243.32932	243.63932
	c.c.	>50-250	Grey	3	243.16934	243.32934	243.63934
	c.c.	>250	Grey	8	243.16938	243.32938	243.63938
3P+E	50/60	100-130	Yellow	4	243.1691	243.3291	243.6391
	50/60	200-250	Blue	9	243.1694	243.3294	243.6394
	50/60	380-415	Red	6	243.1696 (▲)(*)	243.3296 (▲)(*)	243.6396 (▲)
	60	440-460	Red	11	243.16965	243.32965	243.63965
	50/60	480-500	Black	7	243.16966	243.32966	243.63966
	50/60	600-690	Black	5	243.16967	243.32967	243.63967
	50/60	380/440	Red	3	243.16964	243.32964	243.63964
	100-300	>50	Green	10	243.16961	243.32961	243.63961
>300-500	>50	Green	2	243.16962	243.32962	243.63962	
3P+N+E	50/60	100-130	Yellow	4	243.1692	243.3292	243.6392
	50/60	208-250	Blue	9	243.1695	243.3295	243.6395
	50/60	346-415	Red	6	243.1697 (▲)(*)	243.3297 (▲)(*)	243.6397 (▲)
	50/60	480-500	Black	7	243.16976	243.32976	243.63976
	50/60	600-690	Black	5	243.16977	243.32977	243.63977
	60	440-460	Red	11	243.16975	243.32975	243.63975
	50/60	380/440	Red	3	243.16974	243.32974	243.63974
	>300-500	>50	Green	2	243.16972	243.32972	243.63972

□ Package/Bulk Pack.

⁽¹⁾ 3P+N+E= □ 10/40

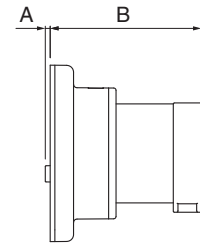
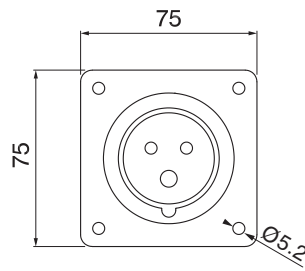
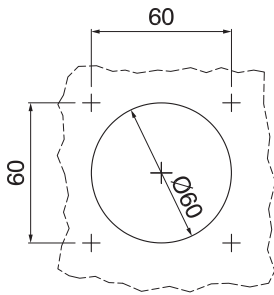


= Screw terminals



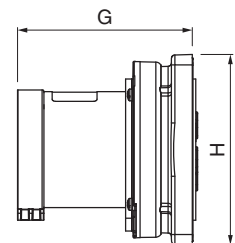
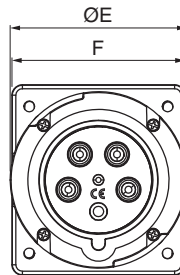
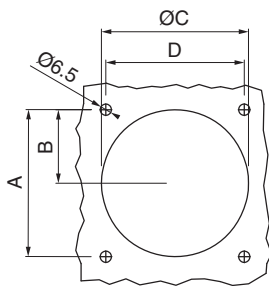
= Mantle terminals

(♦) Cable gland provided

**APPLIANCE INLETS 16-32A
IP 44**


		A	B
16A	2P+E	2	65
	3P+E	2	65
	3P+N+E	2	65
32A	2P+E	19	73
	3P+E	19	73
	3P+N+E	19	73

(Dimension in mm)

**APPLIANCE INLETS 63-125A
IP44**


	A	B	ØC	D	ØE	F	G	H
63A	2P+E	85	42.5	85	80	102	101	110
	3P+E	85	42.5	85	80	102	101	110
	3P+N+E	85	42.5	85	80	102	101	110

(Dimension in mm)

