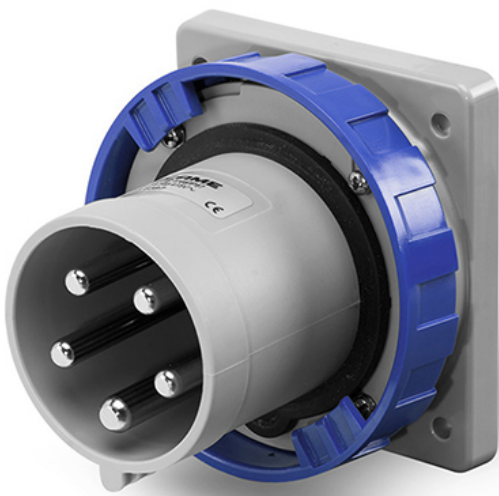
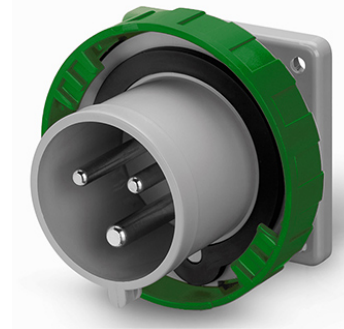
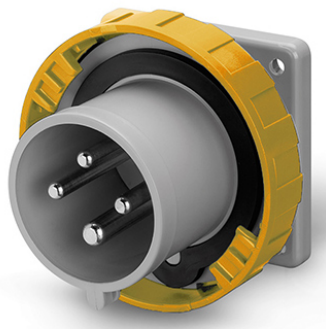




OPTIMA SERIES

Industrial Appliance inlets



■ BEHAVIOUR WITH CHEMICAL AND ATMOSPHERIC AGENTS

Saline solution	Acids		Bases		Solvents				Mineral oil	UV rays
	Concentrated	Diluted	Concentrated	Diluted	Hexane	Benzol	Acetone	Alcohol		
Resistant	Limited Resistance	Resistant	Resistant	Resistant	Not Resistant	Not Resistant	Not Resistant	Limited Resistance	Resistant	Limited Resistance

For specific substances please contact our technical service.

■ WIRING AND INSTALLATION

Wiring capacity of the terminals (mm²)

Max. cable size accepted by the cable clamp:

Rated voltage	Rated current (A)	Plugs, connectors and appliance inlets		Socket outlets	
		Min	Max	Min	Max
Over 50V	16A	1	2,5	1,5	4
	32A	2,5	6	2,5	10
	63A	6	16	6	25
	125A	16	50	25	70

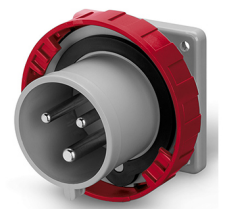
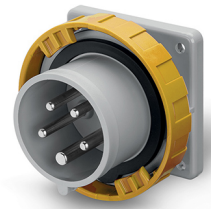
Rated current (A)	Outside Ø mm	
	Min	Max
16A	8	15
32A	11,5	21
63A	17	31
125A	26	48

■ APPLICATION EXAMPLES



Industrial plugs and sockets

FLUSH MOUNTING APPLIANCE INLETS



IP66/IP67

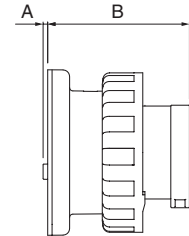
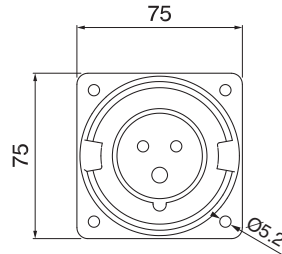
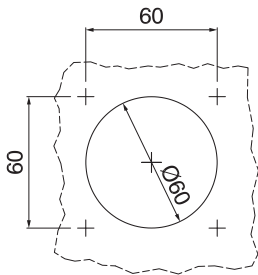
Poles	Hz.	Volt	Colour	h.	Screw terminals		Mantle terminals	
					16A 75x75 □ 10/100	32A 75x75 □ 10/50 ⁽¹⁾	63A 100x110 □ 10	125A 114x114 □ 10
2P+E	50/60	100-130	Yellow	4	248.1690	248.3290	248.6390	248.12590
	50/60	200-250	Blue	6	248.1693 (▲)	248.3293 (▲)	248.6393 (▲)	248.12593 (▲)
	50/60	380-415	Red	9	248.1698	248.3298	248.6398	248.12598
	50/60	480-500	Black	7	248.16936	248.32936	248.63936	248.125936
	50/60	trasf.	Grey	12	248.16933	248.32933	248.63933	248.125933
	>300-500	>50	Green	2	248.16932	248.32932	248.63932	248.125932
	c.c.	>50-250	Grey	3	248.16934	248.32934	248.63934	248.125934
	c.c.	>250	Grey	8	248.16938	248.32938	248.63938	248.125938
3P+E	50/60	100-130	Yellow	4	248.1691	248.3291	248.6391	248.12591
	50/60	200-250	Blue	9	248.1694	248.3294	248.6394	248.12594
	50/60	380-415	Red	6	248.1696 (▲)(◐)	248.3296 (▲)(◐)	248.6396 (▲)	248.12596 (▲)
	60	440-460	Red	11	248.16965	248.32965	248.63965	248.125965
	50/60	480-500	Black	7	248.16966	248.32966	248.63966	248.125966
	50/60	600-690	Black	5	248.16967	248.32967	248.63967	248.125967
	50/60	380/440	Red	3	248.16964	248.32964	248.63964	248.125964
	100-300	>50	Green	10	248.16961	248.32961	248.63961	248.125961
>300-500	>50	Green	2	248.16962	248.32962	248.63962	248.125962	
3P+N+E	50/60	100-130	Yellow	4	248.1692	248.3292	248.6392	248.12592
	50/60	208-250	Blue	9	248.1695	248.3295	248.6395	248.12595
	50/60	346-415	Red	6	248.1697 (▲)(◐)	248.3297 (▲)(◐)	248.6397 (▲)	248.12597 (▲)
	50/60	480-500	Black	7	248.16976	248.32976	248.63976	248.125976
	50/60	600-690	Black	5	248.16977	248.32977	248.63977	248.125977
	60	440-460	Red	11	248.16975	248.32975	248.63975	248.125975
	50/60	380/440	Red	3	248.16974	248.32974	248.63974	248.125974
	>300-500	>50	Green	2	248.16972	248.32972	248.63972	248.125972

□ Package/Bulk Pack.

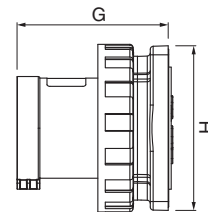
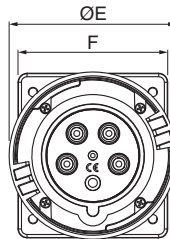
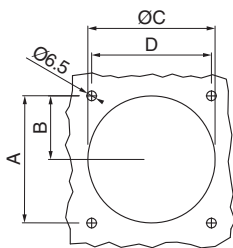
⁽¹⁾ 3P+N+E= □ 10/40

= Screw terminals

= Mantle terminals

**APPLIANCE INLETS 16-32A
IP66/67**


		A	B	
16A	2P+E	2	65	(Dimension in mm)
	3P+E	2	65	
	3P+N+E	2	65	
32A	2P+E	19	73	(Dimension in mm)
	3P+E	19	73	
	3P+N+E	19	73	

**APPLIANCE INLETS 63-125A
IP66/67**


		A	B	ØC	D	ØE	F	G	H	
63A	2P+E	85	42.5	85	80	112	100	101	110	(Dimension in mm)
	3P+E	85	42.5	85	80	112	100	101	110	
	3P+N+E	85	42.5	85	80	112	100	101	110	
125A	2P+E	100	50	95	100	128.5	114	113.5	114	(Dimension in mm)
	3P+E	100	50	95	100	128.5	114	113.5	114	
	3P+N+E	100	50	95	100	128.5	114	113.5	114	

