



OPTIMA SERIES

SURFACE MOUNTING SOCKETS OUTLETS IP67



■ BEHAVIOUR WITH CHEMICAL AND ATMOSPHERIC AGENTS

Saline solution	Acids		Bases		Solvents				Mineral oil	UV rays
	Concentrated	Diluted	Concentrated	Diluted	Hexane	Benzol	Acetone	Alcohol		
Resistant	Limited Resistance	Resistant	Resistant	Resistant	Not Resistant	Not Resistant	Not Resistant	Limited Resistance	Resistant	Limited Resistance

For specific substances please contact our technical service.

■ WIRING AND INSTALLATION

Wiring capacity of the terminals (mm²)

Max. cable size accepted by the cable clamp:

Rated voltage	Rated current (A)	Plugs, connectors and appliance inlets		Socket outlets	
		Min	Max	Min	Max
Over 50V	16A	1	2,5	1,5	4
	32A	2,5	6	2,5	10
	63A	6	16	6	25
	125A	16	50	25	70

Rated current (A)	Outside Ø mm	
	Min	Max
16A	8	15
32A	11,5	21
63A	17	31
125A	26	48

■ APPLICATION EXAMPLES



Industrial plugs and sockets

■ OPTIMA Series >> Surface mounting socket outlets

OPTIMA Series










517.



 **Screw terminals**
[Angled box]

SURFACE MOUNTING SOCKET

IP66/IP67/IP69

Poles	Hz	Volt	Colour	h	M20X1,5		M25X1,5		M32X1,5	
					16A	10/50	16A	10/50	32A	10/40
2P+E		100-130V		4h	517.1650	10/50			517.3250	10/40
		200-250V		6h	517.1653	10/50			517.3253	10/40
		380-415V		9h	517.1658	10/50			517.3258	10/40
3P+E	50Hz 60Hz	100-130V		4h			517.1651	10/50	517.3251	10/40
		200-250V		9h			517.1654	10/50	517.3254	10/40
		380-415V		6h			517.1656	10/50	517.3256	10/40
		380V 50Hz / 440V 60Hz		3h					517.32564	10/40
3P+N+E		100-130V		4h			517.1652	10/40	517.3252	10/40
		208-250V		9h			517.1655	10/40	517.3255	10/40
		346-415V		6h			517.1657	10/40	517.3257	10/40

- Open threaded cable entry
- Threaded cap/cable sleeve included

 = Screw terminals

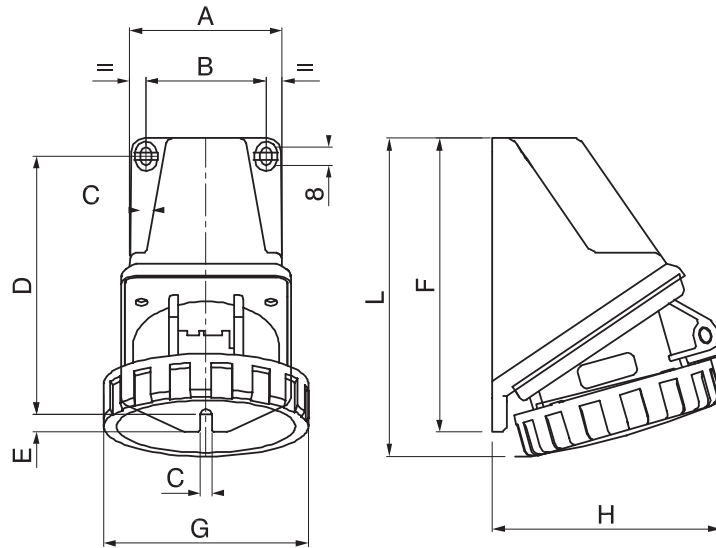
 = Spring terminals (fast wiring)

 = Mantle terminals

OPTIMA SERIES

DIMENSIONS

SURFACE MOUNTING SOCKET OUTLETS - ANGLED BOX 16-32A



IP66/IP67	A	B	C	D	E	F	G	H	I
2P+E	65	52	5	112	7.5	127	73	91	134
16A 3P+E	65	52	5	112	7.5	127	81	95	135
3P+N+E	65	52	5	112	7.5	127	88	98	136
2P+E	80	66	5	121	7.5	137	93	112	147
32A 3P+E	80	66	5	121	7.5	137	93	112	147
3P+N+E	80	66	5	121	7.5	137	101	113	149

(Dimension in mm)



www.filippidisandsons.gr