

SELF-TESTING MAINTAINED EMERGENCY LUMINAIRE



TECHNICAL CHARACTERISTICS	GR-390/L	GR-392/L
OPERATION VOLTAGE	220-240V AC/50-60Hz	
MAXIMUM POWER CONSUMPTION	5W/ 7.5VA	5W/ 8VA
BATTERIES (Ni-Cd)	3.6V/1.5Ah	3.6V/3Ah
BATTERY PROTECTION	From overcharge and full discharge	
INDICATIONS - CONTROLS	Charge, lamp fault, fault indication LED, TEST button	
CHARGING TIME	24h	
MINIMUM AUTONOMOUS DURATION	90 min	180 min
ILLUMINATION SOURCE	2X16 LED	
ILLUMINATION (230V / EMERGENCY)	220/220lm	
DEGREES OF COVER PROTECTION	IP 40	
PRODUCED IN ACCORDANCE WITH	EN 60598-1, EN 60598-2-22, 55015, 61547, 61000-3-2, 61000-3-3	
OPERATION TEMPERATURE RANGE	0 to 40 °C	
RELATIVE HUMIDITY	Up to 95%	
CONSTRUCTION MATERIALS	Bayblend FR3010, transparent polycarbonate	
EXTERNAL DIMENSIONS	350 x 134 x 60 mm (CRV 362 x 134 x 90 mm)	
TYPICAL WEIGHT	900gr (CRV 980gr)	970gr (CRV 1050gr)
GUARANTEE	3 years (1 year for the battery)	

Thank you for purchasing this product of Olympia Electronics. A European manufacturer.

GENERAL

These luminaires are used indoors (ta 40°C) where emergency light is needed.

Each luminaire must be permanently connected to mains power supply.

In normal operation the led strip lights and the battery is charging.

In case of a mains power supply failure the luminaire will light the led strip automatically in emergency mode. When the mains power supply is restored the device turns to normal operation.

INSTALLATION

To install the luminaire follow the installation instructions on page 3.

Battery Cut-off

The luminaire enters in this operation when the mains power supply fails and battery has lost its energy. During this operation the luminaire enters the idle state and battery consumption is negligible, in order to be protected from deep discharge.

Battery charging

The battery charging is completely controled. In this case, is achieved the perfect battery maintenance , as well as the elongation of its duration. When the battery has completely charged, it charges with a maintenance current.

Manual Test

The manual test can be conducted only if the

main power supply and the battery is connected. By pressing the test button briefly an operation test is initiated. During this test period all indication LEDs are OFF.

Automatic test

This test includes all the operations that provide the manual test and is conducted automatically every 15 days. In order to be performed, the main power supply and the battery should be connected.

Automatic Autonomous Test

The Automatic autonomous Test is conducted and measures the luminaire's back up operation. This test is conducted automatically every six months. In order to be performed, the main power supply and the battery should be connected (the battery should be charged). If the battery is not charged, the test is postponed until the battery is completely charged. If during the Automatic Autonomous Test the luminaire's duration is lower than the named, then the battery must be replaced.

Back Up Operation

The autonomous duration of battery during emergency mode is at least the one that is stated in the list of the first page. During emergency mode, a LED strip test is also performed.

Resetting Errors

Push the Test button for 5 seconds, to extinguish all the indicated LED errors. Then the luminaire

enters regular operation mode.

Indication LED status (with connected mains power supply).

AC Charge

On: Good charge current.
ff: No battery (No charging current or disconnected battery).

Lamp fault

n: faulty LED strip.
Off: Good LED strip.

Fault

ff: Battery OK.
Blink (With AC Charge LED ON): Autonomy or low battery problem
(the battery must be replaced).

Blink (With AC Charge LED Off):
No charging current or disconnected battery.

!!!

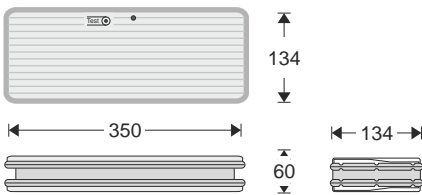
1. Operations for installation, maintenance or testing must be done by authorized personnel only.

MARKING PANEL SP-114

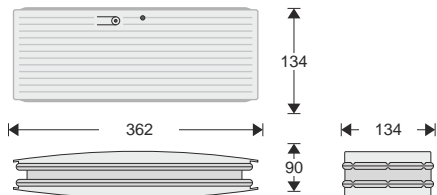
A marking panel SP-114 can be installed on the luminaire in 3 different locations. This marking panel is installed perpendicular to the diffusor of the luminaire, as shown in the pictures below. The panel is pre-printed and has a plastic accessory on each side that is used to fasten the panel to the luminaires. There are 2 arrow stickers that can be placed in each side of the marking panel to point to the desired direction.



Double Easy Light luminaires



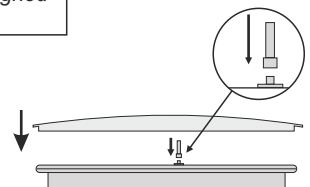
Double Easy Light/CRV luminaires



All the types of **Easy Light** series, are also produced with a new designed crystal with **GR-XXX/CRV** code, for example **GR-392/L/CRV**.

PLACING -CRV PARTS

To install the curve crystal -CRV you must first install the included plastic extension to mount it on the TEST button.



2. The device must be connected to the mains power supply thru a fuse dependent by the total amount of the line's power load.

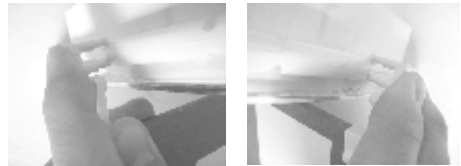
3. In case of battery or lamp replacement, these must be replaced by parts of the same type, by the manufacturer or by a competent person.

4. In case of inactive use for a period greater than 2 months, disconnect the battery by pulling out the battery's connector.

5. **It is not allowed to discard batteries in to common trash bins, they must be discarded only in battery recycling points. Do not incinerate.**

Placing the SP-114 marking panel

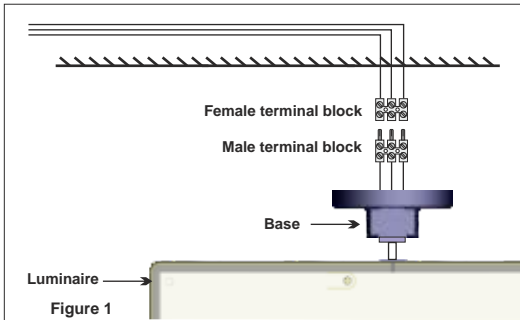
Place the plastic mounting accessories of the marking panel as shown in pictures.



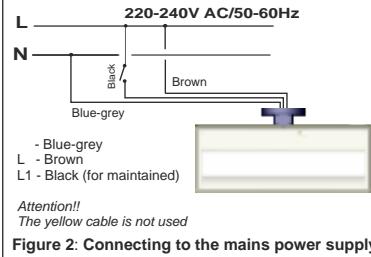
!!! This marking panel (SP type) can not be installed on CRV luminaires.

INSTALLATION INSTRUCTIONS

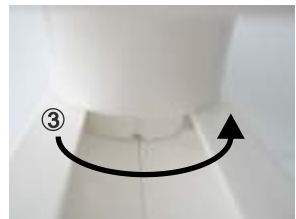
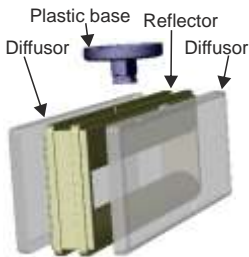
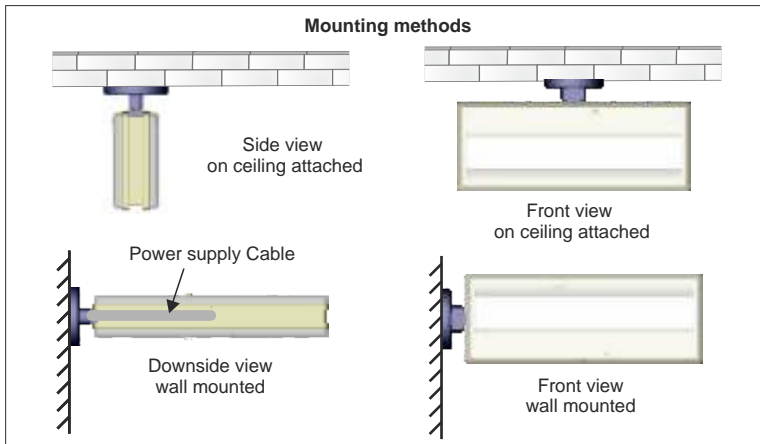
Connecting the terminal block



Connecting to the mains power supply



Mounting methods



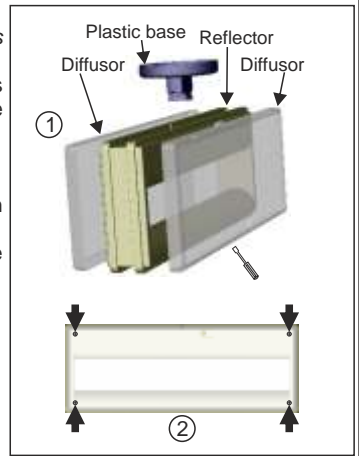
- ① Pass thru the central hole of the plastic base the luminaire's cables and connect them to the included terminal block (figure 1). for neutral, L for live wire and L1 for the maintained operation. The L1 wire can be connected to an external switch to control the maintained or non maintained operation of the luminaire. For permanent maintained operation use two wires to power the luminaire, for neutral and L for live wire, and link the L and L1 (Figure 2).
- ② Use the included mounting accessories to install the plastic base (install the notch, facing the required direction of the luminaire) and follow the mounting methods on the wall or ceiling.
- ③ Install the luminaire to the plastic base by turning it clockwise by 90° and then power it, with the mains power supply.

NOTE!! After finishing the installation you must power the luminaire at least for 24 hours for battery charging to perform the named autonomy.

Battery replacement.

It can be done only by a competent person and after the mains interruption.

1. Turn the luminaire anti-clockwise and detach it from its mounting base. Use a flat blade screwdriver and remove the diffusers.
2. Unfasten the reflector's retaining screws.
3. Disconnect the connector and remove the old battery.
4. Connect the new battery with the same type and place it in the position of the old one.
5. Replace the removed parts (step 1 and 2) and power the device.



NOTE: LED= Light Emitting Diode

LABELING EXPLANATION:

X: Self contained

1: Maintained (*)

A: Including test device

***90: 90min duration**

180: 180min duration

(*) Maintained operation: The luminaire lights its illumination source, when it is powered by the mains power supply or not.

Non-Maintained operation: The luminaire lights its illumination source, only in power supply's failure.