

GR-440/12L

" COMFORT LIGHT " SERIES FOR NON-MAINTAINED EMERGENCY LUMINAIRE WITH WHITE LEDs



TECHNICAL CHARACTERISTICS

OPERATION VOLTAGE	220-240V AC/50-60Hz
MAXIMUM POWER CONSUMPTION	4W / 4.3VA
BATTERY	3.6V/3Ah (Ni-Cd)
BATTERY PROTECTION	From overcharge and full discharge
INDICATIONS - CONTROLS	Battery charging LED, TEST button
CHARGING TIME	24h
MINIMUM AUTONOMOUS DURATION	480min
ILLUMINATION SOURCE	12 white LED's
EMERGENCY ILLUMINATION	85lm
DEGREES OF COVER PROTECTION	IP 42
PRODUCED IN ACCORDANCE WITH	EN 60598-1, EN 60598-2-22, EN 55015, EN 61547, EN 61000-3-2, EN 61000-3-3
OPERATION TEMPERATURE RANGE	0 to 40 °C
RELATIVE HUMIDITY	Up to 95%
CONSTRUCTION MATERIALS	Bayblend FR3010, transparent polycarbonate
EXTERNAL DIMENSIONS	272 x 121 x 50 mm
TYPICAL WEIGHT	685gr.
GUARANTEE	3 years (1 year for the battery)

Thank you for purchasing this product of Olympia Electronics. A European manufacturer.

GENERAL

These luminaires are used indoors (ta 40°C) where emergency light is needed.

Each luminaire must be permanently connected to mains power supply.

In normal operation the battery is charging and the 2 yellow LED's light in the screen.

In case of a mains power supply failure the luminaire will light the illumination LEDs automatically in emergency mode. When the mains power supply is restored the device turns to normal operation.

INSTALLATION

To install the luminaire follow the installation instructions on page 4.

ATTENTION!!!

1. Operations for installation, maintenance or testing must be done by authorized personnel only.

2. The device must be connected to the mains power supply thru a fuse dependent by the total amount of the line's power load.

3. It is suggested to check every month the indication LED for battery charging, and by pushing the TEST button to check the emergency circuit. The illumination LEDs should light as long as the TEST button is pressed. In the opposite condition contact the installer.

4. It is suggested to check every 6 months the minimum autonomous duration by disconnecting the mains power supply. Count the time that the luminaire lights and in case of less time than the minimum autonomous duration the battery must be replaced. If the measured time is considerably less than the minimum autonomous duration contact the installer. In case of battery or light source replacement, these must be replaced by parts of the same type, by the manufacturer or by a competent person.

5. In case of inactive use for a period greater than 2 months, disconnect the battery by pulling out the battery's connector.

6. **It is not allowed to discard batteries in to common trash bins, they must be discarded only in battery recycling points. Do not incinerate.**

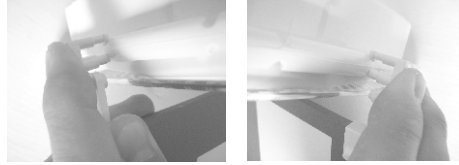


MARKING PANEL SP-115

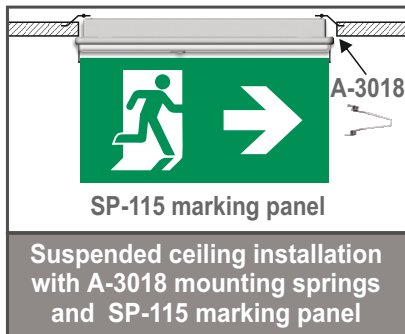
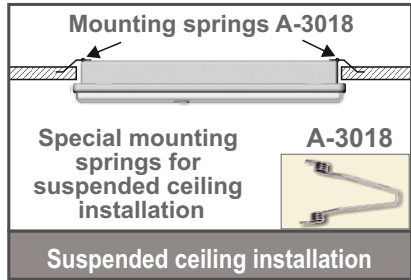
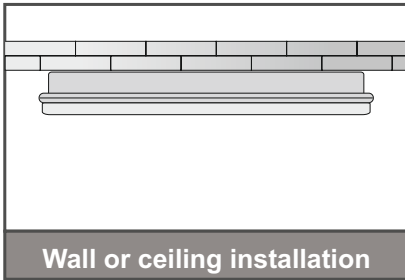
A marking panel SP-115 can be installed on the luminaire in 3 different locations. This marking panel is installed perpendicular to the diffusor of the luminaire, as shown in the pictures below. The panel is pre-printed and has a plastic accessory on each side that is used to fasten the panel to the luminaires. There are 2 arrow stickers that can be placed in each side of the marking panel to point to the desired direction.

Placing the SP-115 marking panel

Place the plastic mounting accessories of the marking panel as shown in pictures.



Installation methods



Mounting methods

All luminaires, can be mounted either surface or in suspended ceilings.

Suspended ceiling installation.

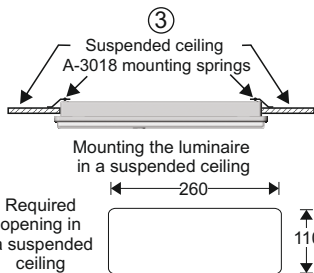
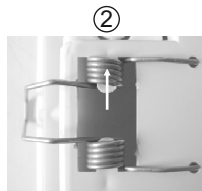
On the bottom of the base plastic of the luminaire there are two H shaped cut outs. These are used to install the A-3018 mounting springs.

1. With a sharp tool remove the appropriate plastic pieces to fit the mounting springs. First place the edges of the mounting spring to the respective holes and install the one end of the coil to the support axis.

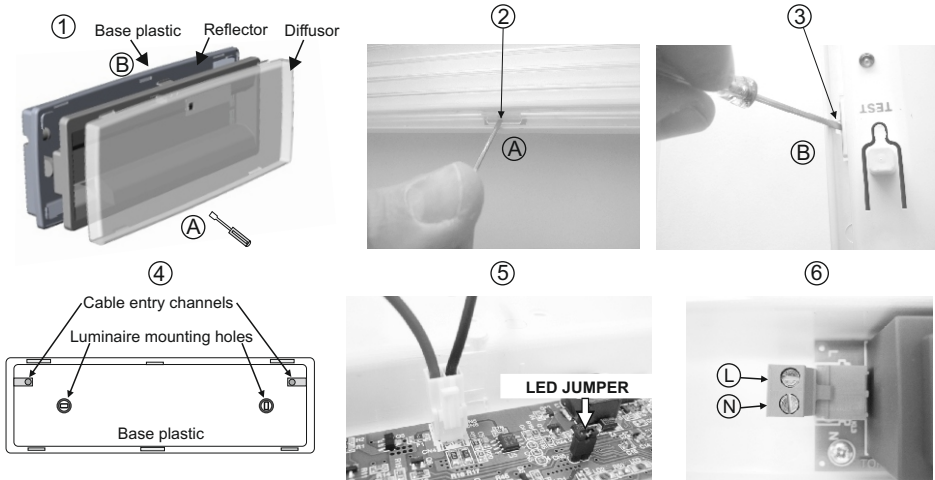
2. Install the other end of the coil to the other support axis.

3. Bend the springs and place the luminaire to the respective suspended ceiling's hole.

The luminaire's placement to the suspended ceiling must be done after the connection with power supply cables.



INSTALLATION INSTRUCTIONS



- ① To install the luminaire you must dismantle it to 3 parts.
- ② Place a flat blade screwdriver in the area **A** to release the diffuser's plastic hooks.
- ③ Place a flat blade screwdriver in the area **B** to release the reflector's plastic hook.
- ④ Use the included mounting parts to mount the base plastic.
Pass the mains cable thru a cable entry channel. The luminaire must be connected to a permanent electrical installation to ensure the immobilization of the cable.
- ⑤ Place the battery's connector to the corresponding connector on the P.C.B. **NOTE!! If you don't need the yellow led's to light in normal operation, then remove the led jumper.**
- ⑥ Connect the mains cables to the terminal blocks.
- ⑦ Refit the removed parts in steps 2 and 3 (mind the correct orientation) and the luminaire is ready to operate.

NOTE!!

After finishing the installation you must power the luminaire at least for 24 hours for battery charging to perform the named autonomy.

Battery replacement.

It can be done only by a competent person and after the mains interruption.

1. Follow the step 2 and 3 of the installation procedure.
2. Disconnect the connector and remove the old battery.
3. Connect the new battery with the same type (step 5 of the installation procedure) and place it in the position of the old one.
4. Follow the step 7 of the installation procedure and power the device.

NOTE: LED= Light Emitting Diode

LABELING EXPLANATION:

X: Self contained

0: Non Maintained (*)

A: Including test device

480: 480min duration

(*) Non-Maintained operation: The luminaire lights its illumination source, only in power supply's failure.

Maintained operation: The luminaire lights its illumination source, when it is powered by the mains power supply or not.