

“ WEATHER LIGHT ” SERIES FOR NON MAINTAINED EMERGENCY LUMINAIRES



| TECHNICAL CHARACTERISTICS (for LED MODULE Specs. see page 3) | | | | |
|---|---|-------------------|-------------------|-------------------|
| | GR-935/15L | GR-935/30L | GR-936/15L | GR-936/30L |
| OPERATION VOLTAGE | 220-240V AC/50-60Hz | | | |
| MAXIMUM POWER CONSUMPTION | 2.5W / 3VA | | | 3.6W / 4.3VA |
| BATTERIES (Ni-Cd) | 3.6V/0.6Ah | 3.6V/1.5Ah | | 3.6V/3Ah |
| BATTERY PROTECTION | From overcharge and deep discharge | | | |
| INDICATIONS - CONTROLS | Charge indication LED, TEST button | | | |
| CHARGING TIME | 24h | | | |
| MINIMUM AUTONOMOUS DURATION | 90 min | | 180 min | |
| ILLUMINATION SOURCE | 15 white LEDs | 30 white LEDs | 15 white LEDs | 30 white LEDs |
| EMERGENCY ILLUMINATION | 125lm | 250lm | 125lm | 250lm |
| DEGREES OF COVER PROTECTION | IP65 | | | |
| PRODUCED IN ACCORDANCE WITH | EN 60598-1, EN 60598-2-22, 55015, 61547, 61000-3-2, 61000-3-3 | | | |
| OPERATION TEMPERATURE RANGE | 5 to 40 °C | | | |
| RELATIVE HUMIDITY | Up to 95% | | | |
| CONSTRUCTION MATERIALS | Bayblend FR3010, transparent polycarbonate | | | |
| EXTERNAL DIMENSIONS | 363 x 145 x 73 mm | | | |
| TYPICAL WEIGHT | 830gr. | 905gr. | | 1000gr. |
| GUARANTEE | 3 years (1 year for the battery) | | | |

**Thank you for your trust in our products.
Olympia Electronics - European manufacturer.**

GENERAL

These luminaires are used in places where emergency luminaires are needed. Each luminaire must be permanently connected to mains power supply. In normal operation the battery is charging and the 2 yellow LED's light in the screen (see step 4 on page 2). In case of a mains power supply failure the luminaire will light the led strip automatically in emergency mode. When the mains power supply is restored the device turns to normal operation.

!!!

- Operations for installation, maintenance or testing must be done by authorized personnel only.
- The device must be connected to the mains power supply through a fuse dependent by the total amount of the line's power load.
- It is suggested to check every month the indication LED for battery charging, and by pushing the TEST button (see the paragraph 9 on page 2), to check the emergency circuit. The lamp should light as long as the TEST button is pressed. In the opposite condition contact the installer.
- It is suggested to check every 6 months the minimum autonomous duration by

disconnecting the mains power supply. Count the time that the led strip lights and in case of less time than the minimum autonomous duration the battery must be replaced. If the measured time is considerably less than the minimum autonomous duration contact the installer. The replacement of the battery and the light source must be done using parts of the same type, by the manufacturer or by a competent person.

5. In case of inactive use for a period greater than 2 months, disconnect the battery by pulling out the battery's connector.

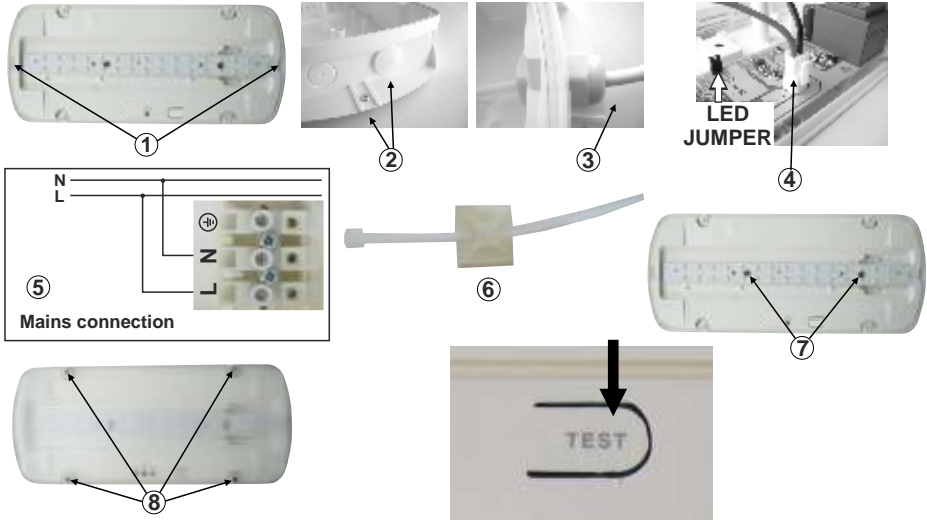
6. **It is not allowed to discard batteries in to common trash bins, they must be discarded only in battery recycling points. Do not incinerate.**

INSTALLATION

To install the luminaire follow the installation instructions in page 2.

INSTALLATION INSTRUCTIONS

- ① Remove the diffuser. Place a flat blade screwdriver and pull up gently the reflector.
- ② Install the included plastic cover in to the unused hole and install the base plastic (with the included mounting screws and plugs).
- ③ **Always use in any case round mains cable, with a diameter of 6-9mm (H05RN-F type 2x1mm² or any other type, at least equal to it's mechanical and electrical properties). ATTENTION!! The cable must not be deformed in any way (This requirement is important to ensure the tightness isolation IP 65).**
Install the cable gland, pass the round cable through and tighten it all the way.
- ④ Place the battery's connector to the corresponding connector on the P.C.B. **NOTE!! If you don't need the yellow leds to light in normal operation, then remove the led jumper.**
- ⑤ Connect the mains as shown on figure (connect the ground wire if required).
- ⑥ Install the included tie (if needed) to fasten securely the power cables.
- ⑦ Refit the reflector and fasten the two small screws (included).
- ⑧ Finally place the diffuser by using the 4 included screws (tightening torque 1.2Nm).



TEST procedure with extra care!!

- ⑨ Unfasten the mounting screws (step 8) and remove the diffuser. When the luminaire is supplied by the mains, press on the marking for TEST as shown on the picture below. Mount the diffuser by using the 4 removed screws.

NOTE!! After finishing the installation you must power the luminaire at least for 24 hours for battery charging to perform the nominal autonomy.

Battery replacement

1. Unfasten the 4 retaining screws (step 8 of the installation instructions) and remove the diffuser.
2. Unfasten the 2 retaining screws step 7 of the installation instructions and remove the reflector.
3. Remove the old battery and place a new one of the same type and characteristics.
4. Replace the removed parts (previous steps 1,2).

NOTE: LED= Light Emitting Diode

Note!! The installer should fill in, on the specification label, the letter **G** if the luminaire is used as a safety sign.



X 0 A G * 9 0

LABELING EXPLANATION:

- X:** Self contained
- 0:** Non Maintained (*)
- A:** Including test device
- G:** Internally illuminated
- *90:** 90min duration

(*) Non Maintained operation: The luminaire lights its illumination source, only in power supply's failure.

Maintained operation: The luminaire lights its illumination source, when it is powered by the mains power supply or not.



The light source contained in this luminaire shall only be replaced by the manufacturer, or his agent, or a similar qualified person.

NOTE! The light source is non-user replaceable.

LED MODULE CHARACTERISTICS

| | GR-935/15L | GR-936/15L | GR-935/30L | GR-936/30L |
|------------------|--|-------------------|-------------------|-------------------|
| Manufacturer | Olympia Electronics S.A | | | |
| Model Number | 1605163/15L | | 1605163/30L | |
| Voltage Range | 8.7-10.8VDC | | | |
| Nominal Power | 1W | | 2W | |
| Connections | Cable connection between main pcb and led module | | | |
| Temperature (tc) | 45 °C max. across the board | | | |

WARRANTY

Olympia Electronics guarantees the quality, condition and operation of the goods. The period of warranty is specified in the official catalogue of Olympia Electronics and also in the technical leaflet, which accompanies each product. This warranty ceases to exist if the buyer does not follow the technical instructions included in official documents given by Olympia Electronics or if the buyer modifies the goods provided or has any repairs or re-setting done by a third party, unless Olympia Electronics has fully agreed to them in writing. Products that have been damaged can be returned to the premises of our company for repair or replacement, as long as the warranty period is valid. Olympia Electronics reserves the right to repair or to replace the returned goods and to or not charge the buyer depending on the reason of defection. Olympia Electronics reserves the right to charge or not the buyer the transportation cost.

HEAD OFFICE

72nd km. O.N.R. Thessaloniki-Katerini
P.C. 60300 P.O. Box 06 Eginio Pierias Greece
www.olympia-electronics.gr
info@olympia-electronics.gr